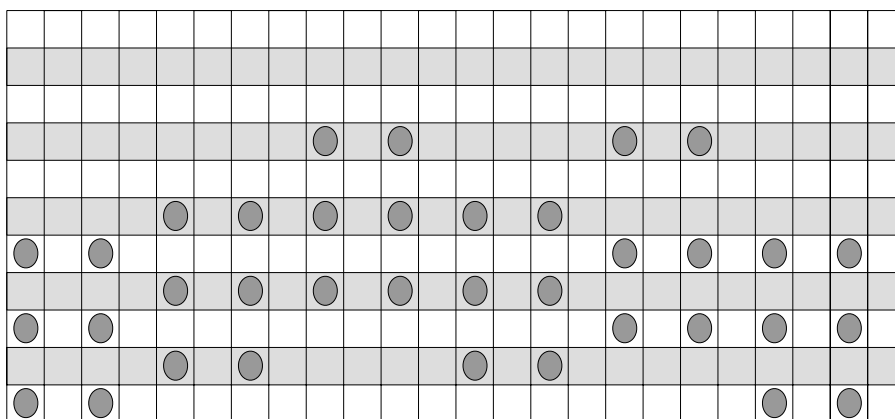


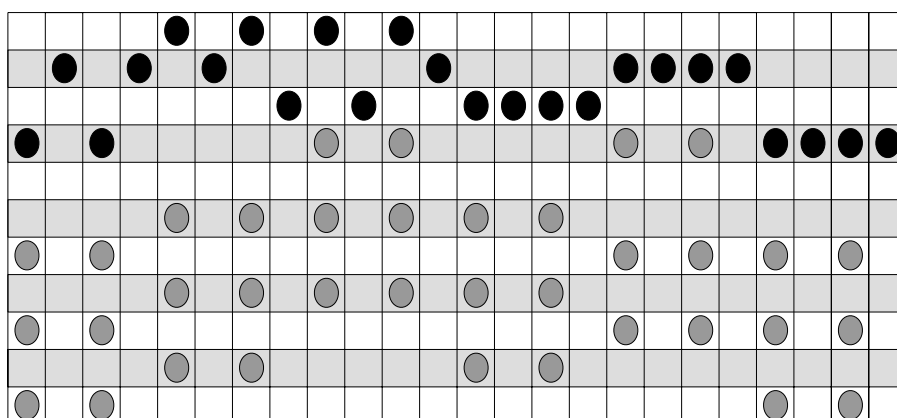
1 — Accompaniment

Copy grid 1 onto the Tune Box screen, using the Piano. Listen to it. It is not really a tune yet, it is just chords - the accompaniment. We want you to put a tune on top of it. Grid 2 shows you one tune that fits, but you could write many others.

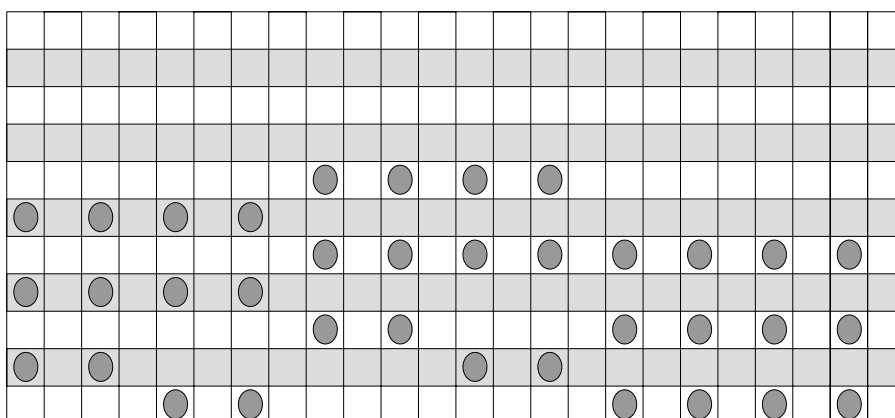
Grid 1



Grid 2



Now try writing a different tune. Can you use just any notes, or do some sound 'wrong' with certain chords? Can you write a tune to go with this next accompaniment?



Note to Teachers.

This worksheet is based on the key of D Major.

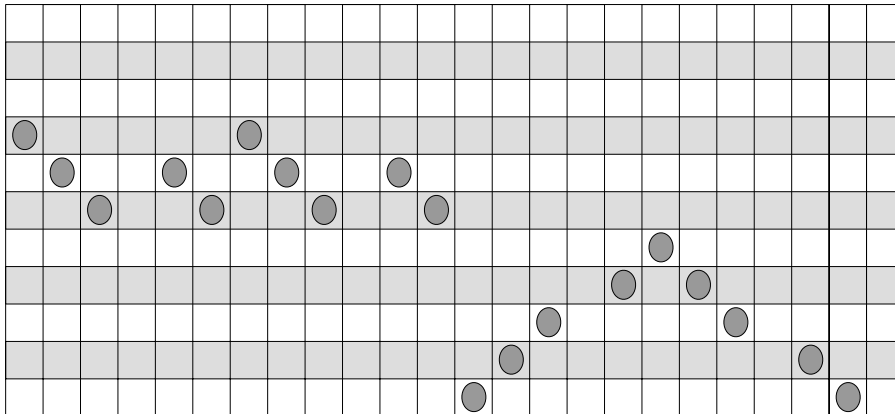
You may copy it for use in the classroom.

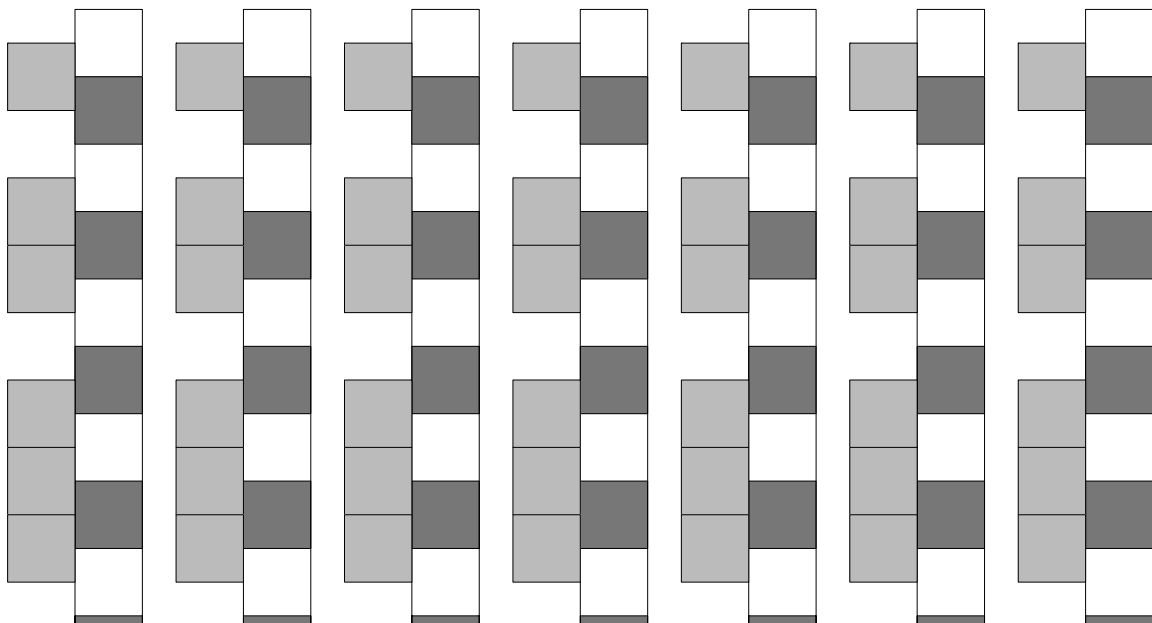
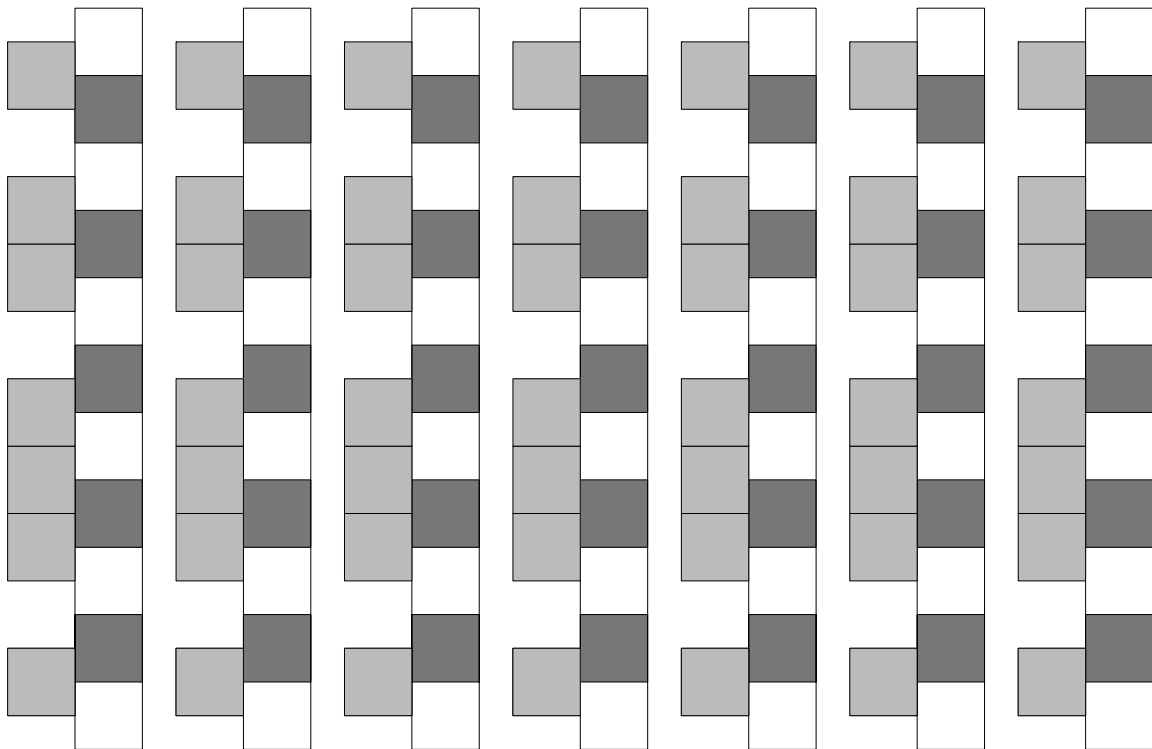
2 — Using Rhythm

Here are three short tunes. Copy one onto the Tune Box screen using the Piano or Vibraphone. Listen to the tune a few times.

Can you put a rhythm line in using the Bass Drum? Try putting the drum every two, three and four spaces... Which works best with which tune? Does it matter if you don't start counting the spaces from the beginning?

Tune 1





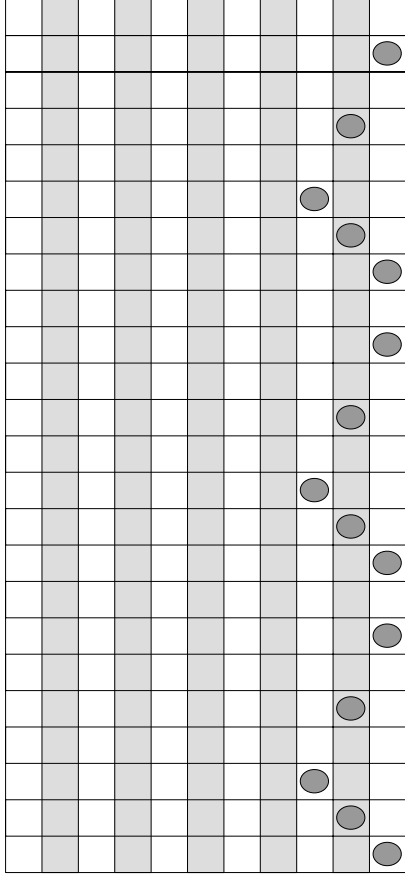
Note to Teachers

This sheet may be copied for use in the classroom.

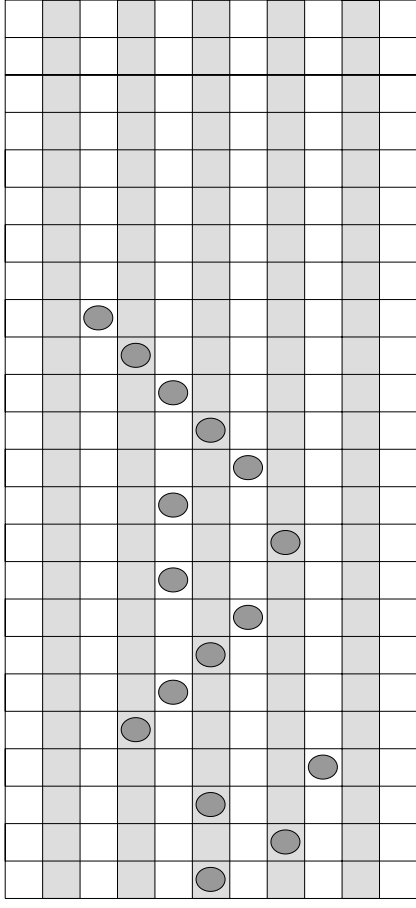
6 — Patterns

Music Box

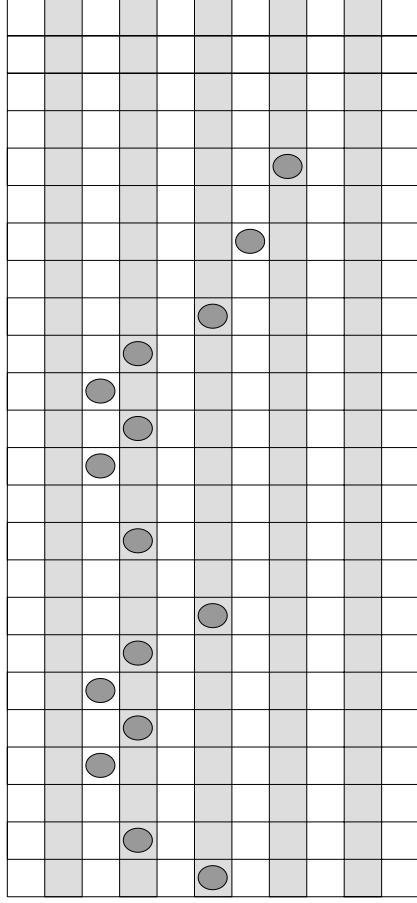
Pattern 1



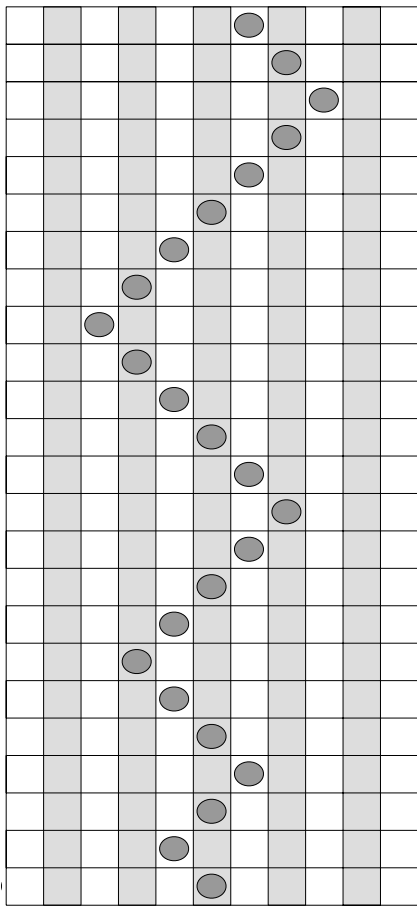
Pattern 3



Pattern 2



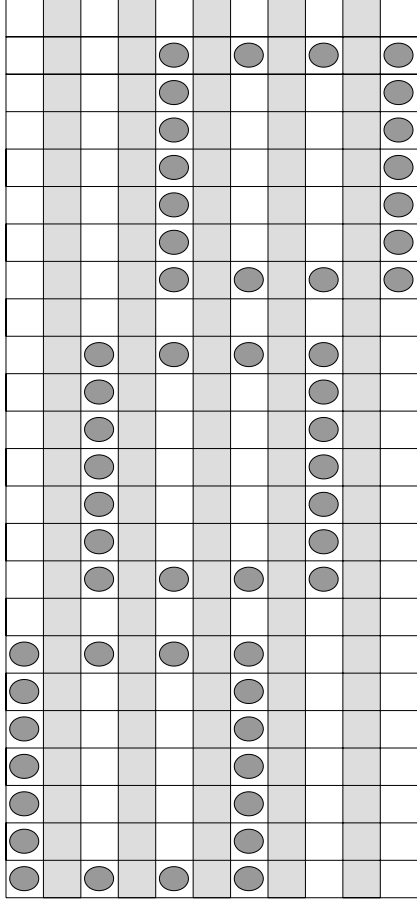
Zig-zag



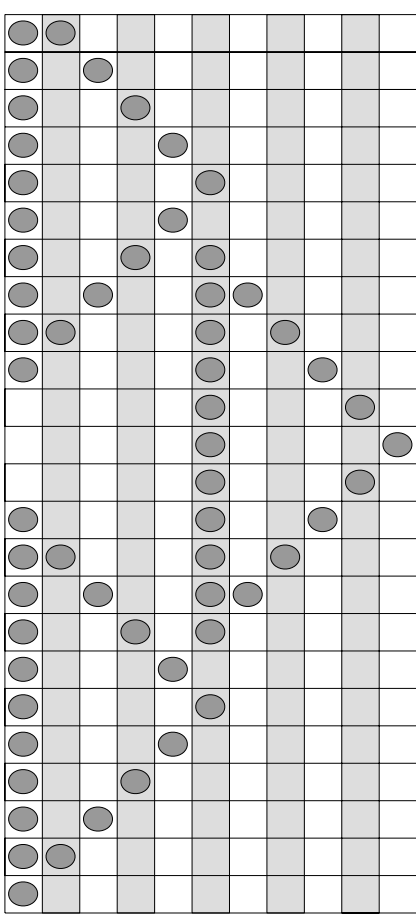
Note to Teachers

This sheet may be copied for use in the classroom.

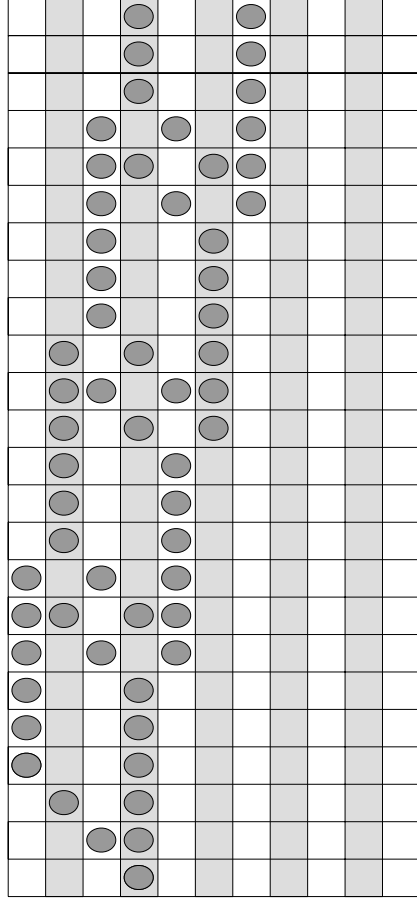
Three squares, descending...



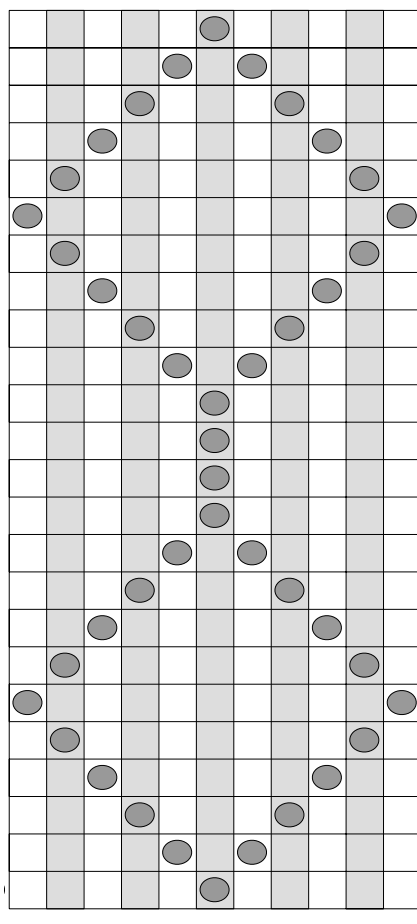
Three isosceles triangles

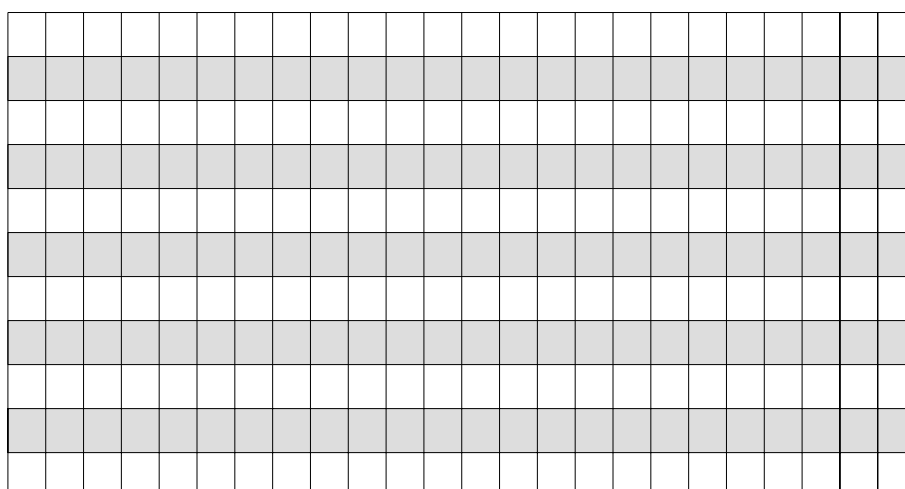
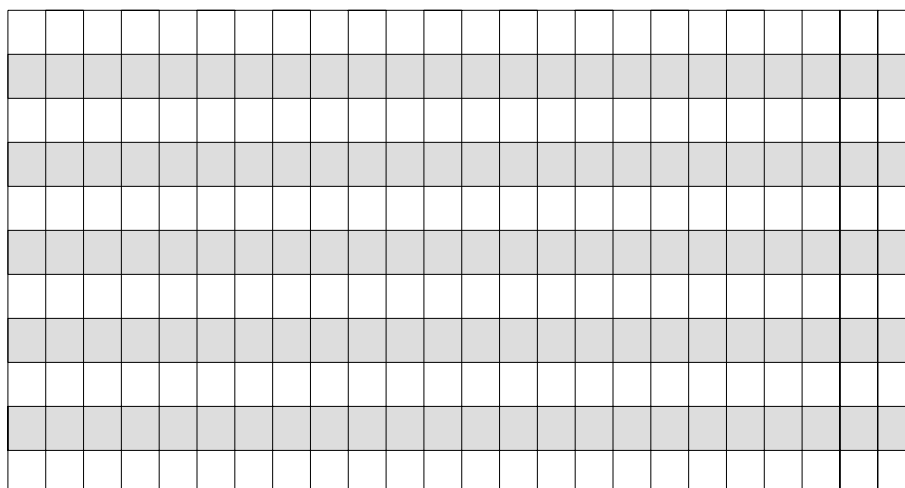
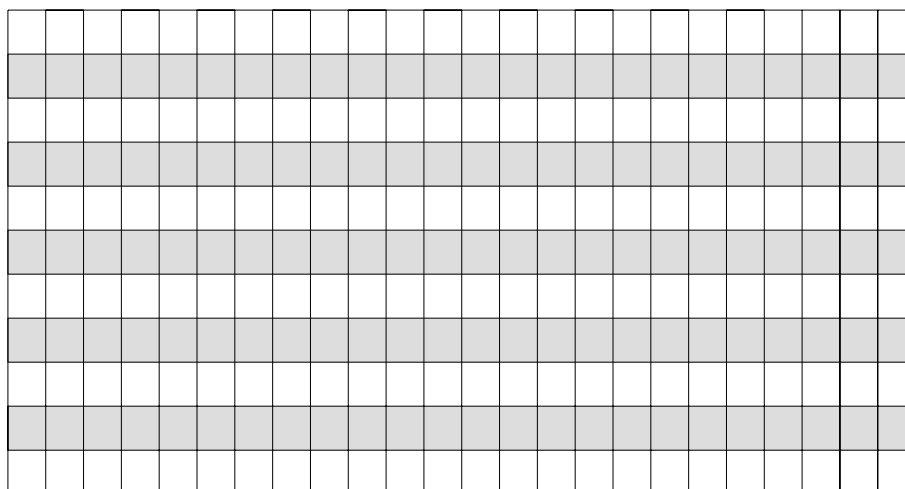


Nearly four parallelograms!



Two linked squares



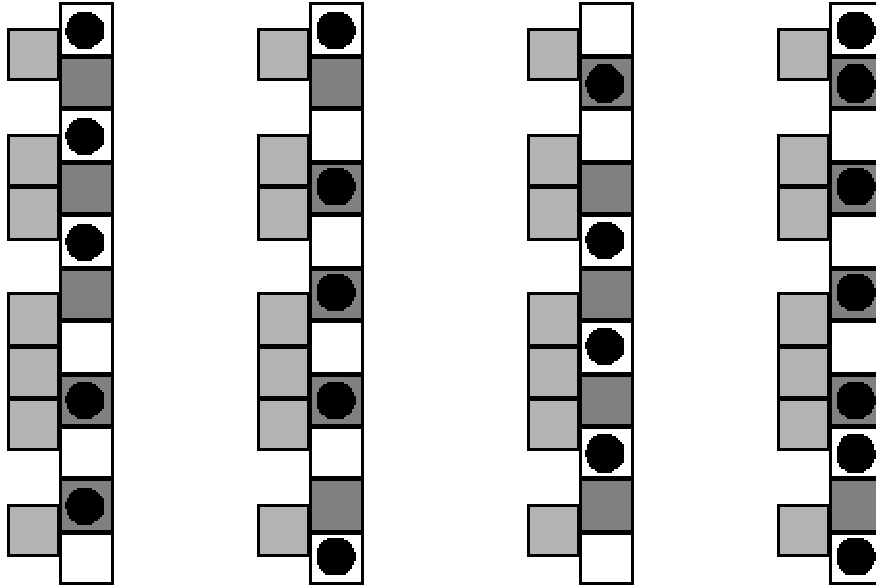


Note to Teachers

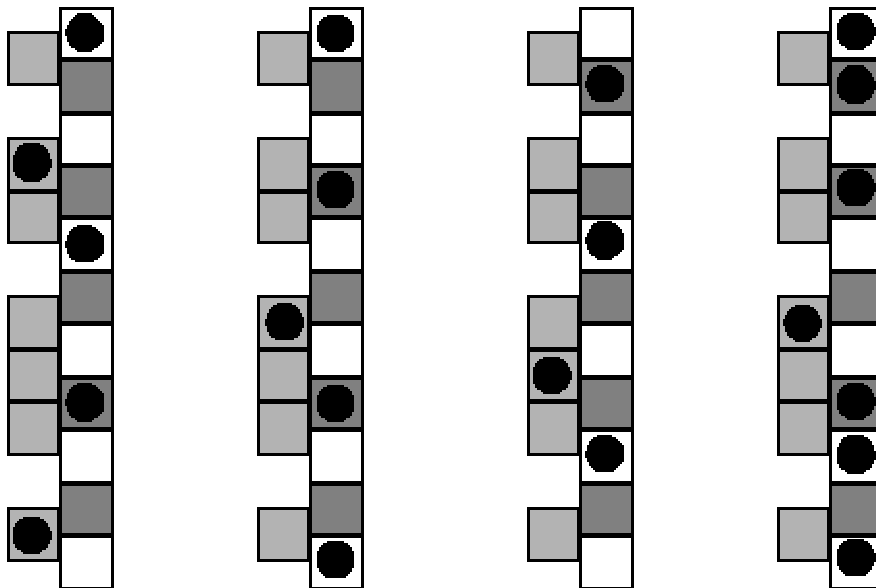
This worksheet may be copied for use in the classroom.

9 - Chord Box

Start Chord Box and copy these chords into the first four columns. See what sequences you can make out of them. What do your sequences sound like? How do they make you feel?



The chords below look similar to those above. Alter your chords to match them, then try playing some sequences. Do your new sequences sound different? Why do you think that is?



Note to Teachers

This sheet may be copied for use in the classroom.



10 - Chord Sequences

Here are some chord sequences for you to try out. You'll find the chord patterns on the back of 'Music Box In The Classroom'.

Sequence 1

1=E 2=A 3=B

Try this with piano or 12 string guitar. Tie the notes into groups of 4.

| | | | | | |
|---------|---------|---------|---------|---------|---------|
| 1-1-1-1 | 2-2-2-2 | 1-1-1-1 | 1-1-1-1 | 2-2-2-2 | 2-2-2-2 |
| 1-1-1-1 | 1-1-1-1 | 1-1-1-1 | 2-2-2-2 | 1-1-1-1 | 1-1-1-1 |
| 2-2-2-2 | 3-3-3-3 | 1-1-1-1 | 1-1-1-1 | | |

Sequence 2

1=G 2=D 3=C 4=A7

Tie in groups of 3.

Try this with the harmonica.

| | | | | | | | |
|-------|-------|-------|-------|-------|-------|-------|-------|
| 1-1-1 | 1-1-1 | 2-2-2 | 2-2-2 | 3-3-3 | 2-2-2 | 1-1-1 | 1-1-1 |
| 1-1-1 | 1-1-1 | 2-2-2 | 2-2-2 | 3-3-3 | 2-2-2 | 1-1-1 | 1-1-1 |
| 3-3-3 | 1-1-1 | 2-2-2 | 1-1-1 | 3-3-3 | 1-1-1 | 4-4-4 | 2-2-2 |
| 1-1-1 | 1-1-1 | 2-2-2 | 2-2-2 | 3-3-3 | 2-2-2 | 1-1-1 | 1-1-1 |

Sequence 3

This one is a lot more complex.

1=C 2=F 3=G 4=Am 5=Dm

Try this with the choir and run it nice and slowly.

Tie all the pairs.

| | | | | | | | | | | | | | | |
|-----|-----|-----|-----|-----|-----|-----|---|---|-----|-----|-----|---|---|-----|
| 1-1 | 2-2 | 2 | 1 | 4-4 | 2-2 | 4-4 | 4 | 5 | 3-3 | 1-1 | 2-2 | 2 | 1 | 4-4 |
| 5-5 | 4-4 | 3-3 | 1-1 | | | | | | | | | | | |

Note to Teachers

This sheet may be copied for use in the classroom.

